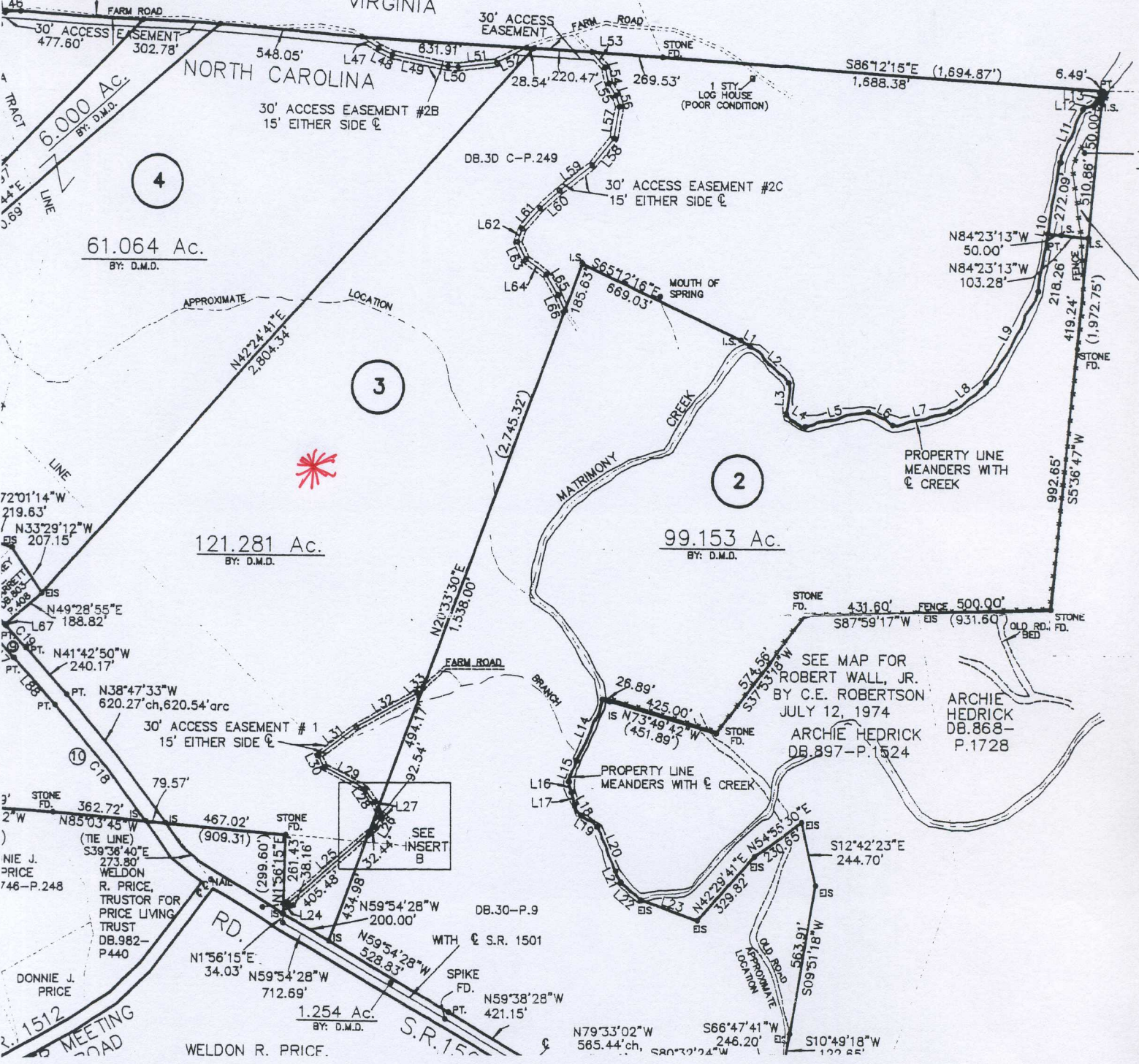


APPEARS TO HAVE BEEN USED BY BOTH PARTIES FOR FARMING AND TIMBERING OPERATIONS

61.S.

VIRGINIA

NORTH CAROLINA



TRACT 4
6.000 AC.
BY: D.M.D.
61.064 Ac.
BY: D.M.D.

APPROXIMATE LOCATION
N42°24'41"E
2,804.34'
121.281 Ac.
BY: D.M.D.

30' ACCESS EASEMENT
30' ACCESS EASEMENT #2B
15' EITHER SIDE C
30' ACCESS EASEMENT #2C
15' EITHER SIDE C
DB.30 C-P.249
MOUTH OF SPRING
99.153 Ac.
BY: D.M.D.

SEE MAP FOR ROBERT WALL, JR.
BY C.E. ROBERTSON
JULY 12, 1974
ARCHIE HEDRICK
DB.897-P.1524

ARCHIE HEDRICK
DB.868-P.1728

72°01'14"W
219.63'
N33°29'12"W
207.15'
N49°28'55"E
188.82'
N41°42'50"W
240.17'
N38°47'33"W
620.27'ch, 620.54'arc
30' ACCESS EASEMENT #1
15' EITHER SIDE C
NIE J. PRICE
746-P.248
DONNIE J. PRICE
RD. 1512
MEETING ROAD

20°37'30"E
1,338.00'
N59°54'28"W
200.00'
N59°54'28"W
528.83'
N59°38'28"W
421.15'
1.254 Ac.
BY: D.M.D.
WELDON R. PRICE
S.R. 1512
Spike FD.
DB.30-P.9
WITH S.R. 1501

STONE FD.
431.60'
FENCE 500.00'
S87°59'17"W
EIS (931.60)
OLD RD. FD.
STONE BED
N84°23'13"W
50.00'
N84°23'13"W
103.28'
218.26'
272.09'
510.88'
150.00'
6.49'
1,688.38'
S86°12'15"E (1,694.87')
STONE FD.
26.89'
425.00'
N73°49'42"W
(451.89')
STONE FD.
574.56'
S37°30'18"W
PROPERTY LINE MEANDERS WITH CREEK
L14, L15, L16, L17, L18, L19, L20, L21, L22
S12°42'23"E
244.70'
N42°29'41"E
N54°55'30"E
S10°49'18"W
S66°47'41"W
246.20'
N79°33'02"W
585.44'ch, S80°30'24"W
S109°51'18"W
563.91'
S09°51'18"W
230.65'